



**TRIAXIAL  
CONSULTING**

COMPLEX PROBLEMS RESOLVED SIMPLY

 1300 874 294

 [admin@triaxial.au](mailto:admin@triaxial.au)

 [triaxial.au](http://triaxial.au)

# CAPABILITY STATEMENT



# Table of CONTENTS

## INTRODUCTION

3 Triaxial At A Glance

## OUR PURPOSE

5 The Triaxial Difference

6 Our Core Capabilities

7 Quality Assured Engineering

8 Engineering Tools

## WHAT WE DO

### By Discipline

10 Structural Engineering

11 Civil Engineering

12 Hydraulic Engineering

13 Remedial Strata & Project Management

14 Remedial Legal & Insurance

### By Sector

16 Industrial

17 Commercial & Retail

18 Community, Sport & Recreation

19 Health, Aged Care & Education

20 Hospitality

21 Materials Handling & Winery Design

22 Residential

23 Mining & Resources

24 Water & Sewer

## WHO WE ARE

26 Our History

27 Our People

28 Meet Our Executive Management

30 Meet Our Leadership Team

## GIVING BACK

32 Charities & Sponsorships

33 Building Our Communities

## WHERE WE ARE

34 Office Locations

# Triaxial AT A GLANCE

We deliver **client specific, practical solutions** to resolve complex problems.

Triaxial was established in 2012 and from these humble beginnings the business has sustained healthy organic growth. Our success can be directly attributed to the prompt, personalised and professional service afforded to all clients from our 10 offices, Australia wide.

**\$2.4 BILLION+**  
WORTH OF PROJECTS

**10**  
LOCATIONS

**17,000+**  
PROJECTS DELIVERED

**30% WOMEN**  
IN ENGINEERING POSITIONS

**80+**  
EMPLOYEES

**AUSTRALIA WIDE**  
REGISTERED ENGINEERS

WHAT OUR CLIENTS SAY

*“Triaxial’s rates are competitive in the market but the level of service provided goes above and beyond their Competitors.”*

Ahrens

AWARDS



# The Triaxial DIFFERENCE

## VISION

**To turn ideas into reality by problem solving like no others.**

## MISSION

To put clients minds at ease by delivering practical solutions and exceeding expectations every time.

## CULTURE

We aim to deliver a fun, friendly and safe workplace for all employees where being real, genuine and your best self is encouraged daily. Triaxial believes in not just creating jobs but building careers in a connected and innovative culture.

## VALUES



Reliable



Professional



Trustworthy



Respectful



Fair

# Our Core CAPABILITIES

*Complex problems resolved simply*

**Innovate**  
Brainstorming and ideas generation. We are early adopters of new technology whether it be for engineering analysis, design, documentation or communication.

**Collaborate**  
Build relationships and connect teams in order to make the best design decisions.

**Total Design**  
Create 3D prototype (BIM). Revit, Clash Detection, IFC, Safety In Design.

**Quality Assurance**  
Ensure quality, safety, sustainability and viability.

1

## INNOVATE

Engineering design is our expertise. We think laterally with our analysis methods to develop highly efficient and buildable structures, incorporating sustainable design & initiatives. We think outside the box to generate original answers to difficult problems.

2

## COLLABORATE

We build relationships with consultants and key stakeholders. We connect teams, data and workflows in order to design solutions that are both sustainable and viable.

3

## TOTAL DESIGN

We build a digital representation of our designed solution, across its lifecycle, from planning and design to construction and operations. Our decades of knowledge and experience guide every stage of the project lifecycle.

4

## QUALITY ASSURANCE

We maintain the highest standards of quality, safety, sustainability and viability. We collaborate with our Clients to ensure all our processes and practices align to produce professional outcomes which meet and exceed all expectations.

# QUALITY ASSURED Engineering



## QUALITY

Quality assurance is at the core of what we do, and integral to our business and reputation. At Triaxial we have internal systems and processes in place to meet customer requirements, prevent defects, and maintain the highest standard of quality. Our Quality Management System has been certified and compliant with ISO9001:2016.

## SAFETY

Triaxial is committed to the health and wellbeing of our employees. Our Occupational Health and Safety Management System (OHSMS) has been certified and compliant with the requirements of ISO45001:2018. This system promotes a healthy working environment while addressing legal, ethical and industrial relations regarding worker safety. We provide training programs to educate workers about health and safety, risks and how to protect themselves.

## SUSTAINABILITY

A dedication to environmental awareness underpins every project we undertake. We take seriously our responsibility to the world around us, which is why we have tools and processes in place to measure and improve upon our environmental impact. This includes our Environmental Management System which is certified and compliant with ISO14001:2018.



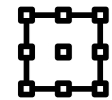
## Memberships & Affiliations



# Engineering TOOLS

By harnessing the power of digital technology combined with the innovation expertise of our professional Engineers and Drafters, we can deliver tailored solutions and transformative outcomes for our clients.

We are early adopters of new technology whether it be for engineering analysis, design, documentation or communication. For the client we are able to optimize projects in terms of quality, sustainability, flexibility and safety.



### Design Tools

12D, Civil Site Design, Civil3D, Drains, ETABS, HEC-RAS, Inducta Suite of Software, Limcon, Magnet (CivilCAD), Metal Building Software, Microstran, MUSIC, RAPT, Sidra Intersection, Slog, Space Gass, Strand7 Finite Element Analysis, Structural Toolkit, Tuflow.

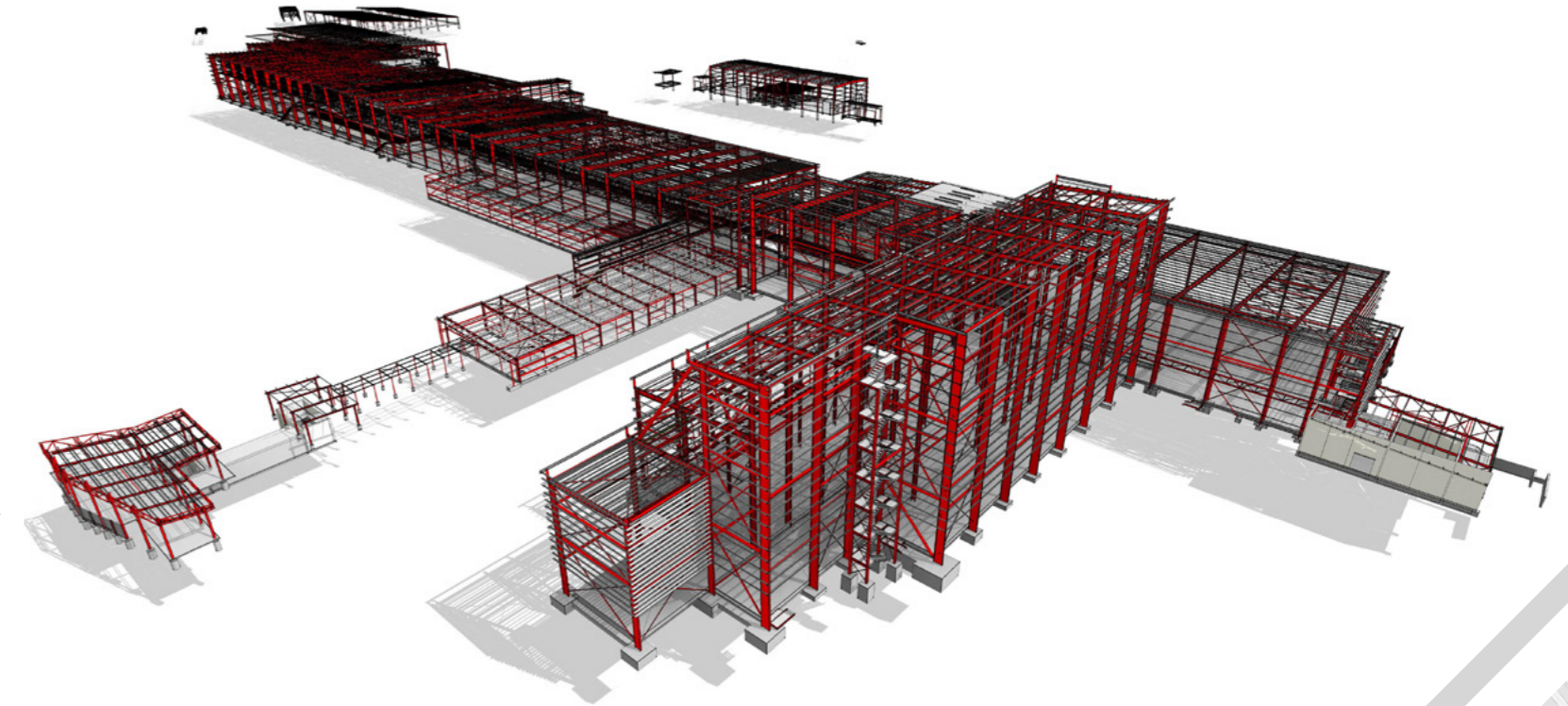


### Drafting Tools

AutoCAD, AutoTURN, BIM, BIM 360, BIM Collaborate Pro, Navisworks (Clash-detection), Revit, Revizto, Vehicle Tracking.



*“We simulate how our designed solutions will perform in the real world.”*



**Thomas Foods, Murray Bridge, SA**

## BUILDING INFORMATION MODELLING (BIM)

We build a digital representation of our designed solution, across its lifecycle, from planning and design to construction and operations.

# STRUCTURAL ENGINEERING

Triaxial are industry leaders in our approach to structural building design. We think laterally with our analysis methods and design approach to develop highly efficient and buildable structures.

## SERVICES INCLUDED

- ▲ Building Information Modelling (BIM)
- ▲ Steel, concrete, timber & masonry design
- ▲ Foundations
- ▲ Finite Element Analysis (FEA)
- ▲ Pre-engineered Building design (PEB)
- ▲ Base building design
- ▲ Fitout design
- ▲ Alterations & extensions
- ▲ Building facades
- ▲ Temporary works design
- ▲ Value engineering assessments & redesign
- ▲ Structural inspections
- ▲ Engineering certification



Ocean View College B-12, SA

# CIVIL ENGINEERING

Triaxial has a wealth of knowledge, expertise and experience acquired over decades of civil engineering. We provide designs incorporating the most efficient and sustainable use of land.

Our highly motivated team are committed to continued professional development to keep abreast of the latest industry solutions and innovations in the ever-changing field of civil engineering.

## SERVICES INCLUDED

- ▲ Roads
- ▲ Stormwater management
- ▲ Water quality assessment
- ▲ Water & wastewater infrastructure
- ▲ Flood analysis & reporting
- ▲ Subdivisions
- ▲ Earthworks modelling
- ▲ Dams
- ▲ Traffic movements
- ▲ Civil inspections
- ▲ Retaining & pavements



Kemps Creek Cemetery, NSW

## HYDRAULIC ENGINEERING

Triaxial have a highly experienced team of skilled hydraulic services engineering staff for the design and documentation of any size project.

Triaxial provides a holistic approach to the hydraulic services design from inception, dealing with authorities, preliminary designs and co-ordinated final designs for the Client's use.

### SERVICES INCLUDED

- ▲ Fire Protection
- ▲ Stormwater Design
- ▲ Sanitary Plumbing
- ▲ Water Supply
- ▲ Trade Waste
- ▲ Natural Gas
- ▲ Green Designs
- ▲ Water Sensitive Design
- ▲ Flooding



Woodglen, NSW

## REMEDIAL STRATA & PROJECT MANAGEMENT

Triaxial are leaders in building diagnostics and forensic engineering from investigations and assessments through to management of remediation works.

We work closely with stakeholders to provide timely, objective reporting and solutions.

### SERVICES INCLUDED

- ▲ Assessment & Reporting
- ▲ Dilapidation Survey
- ▲ Inspection & Reports
- ▲ Scope of Works
- ▲ Tender Documentation, Process & Analysis
- ▲ Specialist Services
- ▲ Project Management



ANZ Building Roof Inspection, NSW

## REMEDIAL LEGAL & INSURANCE

Triaxial are leaders in building diagnostics and forensic engineering across Australia, from investigations and assessments through to management of remediation works.

We work closely with key stakeholders to provide timely, objective and professional reporting.

### SERVICES INCLUDED

- ▲ Forensic Investigations
- ▲ Rope Access & Confined Spaces Specialist Investigations
- ▲ Forensic Engineering Assessment & Reporting
- ▲ Civil/Structural Analysis, Design & Documentation
- ▲ Scope Of Works
- ▲ Tender Documentation, Process & Analysis
- ▲ Project Management
- ▲ Contract Documentation & Execution
- ▲ Litigation Compliant Reports & Expert Witness Services



Collaroy Storm Surge Damage, NSW

*"Triaxial is committed to continue to be a leader in the engineering services we offer, to meet the key challenges of the future. We are focused on building lasting relationships with our partners and clients"*



# INDUSTRIAL

Triaxial are industry leaders in our approach to industrial building design. Our extensive experience in Industrial design ranges from small C-Section sheds to large 70,000sqm warehouses. Aviation buildings and product storage facilities also form part of our Industrial design capabilities.

We use up-to-date design analysis tools and approaches, including Direct Strength Method

for cold-formed sheds, plastic design for heavy industrial structures and MBS for Pre-Engineered Buildings.

**“Triaxial are very cost effective and look at initiatives and design values to save cost.”**

**M&J Builders**



Siemens Facility, SA

## PROJECTS

### METCASH DISTRIBUTION CENTRE, SA

70,000sqm of ambient, coolroom and freezer warehousing with three 2-storey offices.

### INCITEC PIVOT, SA

76 metre clear span (PEB) storage facility for fertilizer products, totalling over 18,000sqm in floor area.

### BOND HANGAR, NT

Large clear span dual helicopter hangar designed to cyclonic wind conditions at Darwin International Airport.

### MARRICKVILLE FREEZERS DISTRIBUTION CENTRE, NSW

Development of a 10,000sqm site to incorporate cold and dry storage warehousing with office facilities.

### SEIMENS FACILITY, SA

Logistics warehousing facility which incorporates heavy (50 tonne) overhead gantry cranes.

# COMMERCIAL & RETAIL

Triaxial has provided innovative methods and approaches to the civil and structural engineering designs.

Triaxial has extensive experience in engineering efficient and practical designs. We work closely with clients, architects and services consultants to design and model fit-for-purpose buildings and infrastructure.

We have a proven track record of delivering significant improvements to our clients' business operation.

**“Work has always been cost efficient with the fee and Triaxial has worked to save us money in the design.”**

**Ekim Properties**



Wilson Parking Angas Street, SA

## PROJECTS

### BUNNINGS EDWARDSTOWN, SA

\$45M two-storey hardware store with 20,000sqm of under-croft carparking making it SA's largest Bunnings Warehouse.

### SCARBOROUGH BEACH RD HOMEMAKER CENTRE, WA

Premium showrooms and warehouses covering over 10,000sqm of retail area for tenants such as Officeworks and Freedom Furniture.

### HARLEY-HEAVEN & TRIUMPH SYDNEY, NSW

Showcasing Harley Davidson and Triumph motorcycles in premier showrooms with an integrated service centre and offices.

### FOODLAND KAPUNDA, SA

\$7M regional Foodland supermarket incorporating materials and aesthetics that preserve the historic township of Kapunda.

# COMMUNITY, SPORT & RECREATION

Triaxial has extensive experience in engineering efficient and practical designs of Community, Sport & Recreation facilities.

Triaxial has provided innovative methods and approaches to civil and structural engineering design for this sector.

We work closely with clients, architects and services consultants to design and model fit-for-purpose buildings and infrastructure.

**"We have been with Triaxial from Day 1 of their Company and the fee structure reflects the team efforts that produces the works - this reflects back value for money, time and efficiencies."**

**Tailor-Made Building Services**



The F.A.R.M. Centre, SA

# HEALTH, AGED CARE & EDUCATION

Triaxial are at the forefront in our approach to civil and structural engineering of Health, Aged Care and Educational facilities. We work closely with consultants and key stakeholders to design and model functional and appealing facilities that are both sustainable and viable.

From remote indigenous schools to city hospitals, Triaxial has broad and extensive engineering knowledge in this field. Triaxial has provided design

services for projects valuing over \$250M for these sectors, for both private and government clients.

**"Triaxial gets their job done, but are still willing to provide support through the remainder of the project."**

**Ahrens**



Royal Darwin Hospital Upgrade, NT

## PROJECTS

### GLEN WILLOW RUGBY LEAGUE CLUBHOUSE, MUDGEES NSW

The rugby league clubhouse forms part of a \$10M funding injection into the Glen Willow Sporting Complex.

### THE F.A.R.M. CENTRE, SA

The Freeling Agriculture Recreation and Multi-use Centre is a trades and sports hall for the township of Freeling. It includes indoor courts, training and meeting rooms, health club, café and kitchen.

### HIDDEN VALLEY MOTOR SPORTS COMPLEX GRANDSTAND, NT

Construction of a corporate VIP grandstand over existing pitlane garages for the NT Government Department of Infrastructure.

### AFL MAX, SA

This indoor sporting facility integrates an open football field with many other indoor activities such as rock climbing, trampolines, interactive walls and play equipment.

## PROJECTS

### ROYAL DARWIN HOSPITAL UPGRADE, NT

\$72M upgrade incorporating refurbishments and additions to main entry, emergency dept and outpatients along with building extensions for CT and PET Scanners.

### BAROSSA VILLAGE INC, SA

28 independent living units across 3 townships and an 'Allied Health Centre' featuring a hydrotherapy pool, treatment rooms and gym.

### MUDGEES HOSPITAL REDEVELOPMENT, NSW

\$70M redevelopment of the Mudgees Hospital for NSW Health to upgrade existing infrastructure and combine health and dental services.

### HENLEY HIGH SCHOOL REDEVELOPMENT, SA

\$10M infrastructure additions, including new general learning areas, science and arts building, administration and staff rooms and additional carparking and landscaping.

# HOSPITALITY

Triaxial has extensive experience in the engineering design of Hospitality Facilities including hotels, cafes & restaurants, accommodation and cellar doors.

We work closely with clients, architects and services consultants to design and model fit-for-purpose and practical facilities.

Triaxial has provided innovative methods and approaches to civil and structural engineering design for a range of various Hospitality Facilities across Australia. We have a proven track record of delivering significant improvements to our clients' business operation.

**" Triaxial's rates are competitive in the market but the level of service provided goes above and beyond their Competitors. "**

Ahrens



The Barons Cellar, SA

# MATERIALS HANDLING & WINERY DESIGN

Triaxial has extensive experience in the design of materials handling facilities and structures, ranging from regional grain terminals to transportable field bins.

Triaxial are innovators in winery design and collaborate with process engineers and winemakers from concept layouts to final analysis of equipment, support structure and access.

We work closely with mechanical and equipment consultants to engineer simplified and practical structures in this otherwise complicated industry sector.

**"Triaxial always comes up with a suitable solution that meets our needs."**

Pernod Ricard



Tremletts Grain Silos, SA

## PROJECTS

### ST HUGO WINES, SA

Transformation of the old William Jacob's winery, with 1850's ironstone barn and courtyard, into a fine dining restaurant and premium cellar door.

### LOT. 100, SA

The popular food and craft beverage producers facility that brings 'industrial versus agricultural' architecture with a sophisticated modern fit-out that has proved to be a benchmark project for sustainability and renewable energy.

### THE BARONS CELLAR, SA

A central hub for the region's grape growing and winemaking activities including cellar and vault rooms constructed into the Vine Vale hillside.

### BAROSSA VALLEY CHOCOLATE COMPANY, SA

Constructed partially over a dam and in the heart of the Barossa sits the handmade chocolate making factory, including production kitchen, café, ice creamery and cellar door.

## PROJECTS

### INGHAM'S FEED PLANT, SA

\$53M animal feed plant featuring a 13 level mill building, inground hoppers, warehouses & workshops and 45 silos with capacity to produce 100 tonnes of feed per hour.

### T-PORTS GRAIN TERMINAL, SA

\$115M port facility for grain handling, including 24,000 tonnes of silo storage and conveyor loading onto transshipment vessels of up to 13,800 tonnes per day.

### PETALUMA WINERY, SA

A 'greenfield project' winery in the Adelaide Hills including grape receive, production and storage, increasing Petaluma's capacity by 1.2M bottles per year.

### ORORA GLASS MANUFACTURING FACILITY, SA

Continual and extensive upgrade works to the manufacturing facility, including workshops, warehousing, recuperator access, and gantry enclosures.

# RESIDENTIAL

Triaxial has extensive experience in engineering both high-volume and complicated residential buildings.

Whether it's a small/tiny house, a conventional or high end architecturally designed home or even multistory apartments, Triaxial provides the full suite of residential engineering services to clients across Australia.

We work closely with Owners, Architects, Builders, Councils and Services Consultants to design and model customised homes and apartments.

**"Triaxial are easy to deal with and they think outside of the box."**

**AKA Studio**



Mudgee House, NSW (Rammed Earth Walls)

## PROJECTS

### MUDGEE HOUSE, NSW (RAMMED EARTH WALLS)

Structural design of the residence utilising rammed earth walls that have high thermal mass and provide excellent insulation.

### DARWIN HOUSE, NT Winner of National Project Home, 2019

A 'Noonamah Family Retreat' according to M&J Builders who won the award for Environment & Energy Efficiency (Residence).

### KINGSFORD HOMESTEAD, SA

Structural & Civil design of significant restoration and additions to the 1856 homestead that has now become one of Australia's finest luxury retreats.

### ROCKDALE APARTMENTS, SA

Structural design of the 9-storey apartment building comprising reinforced concrete walls, slabs and foundations.

# MINING & RESOURCES

Triaxial have provided civil and structural engineering services for significant mining and resources projects from the Pilbara to the East Coast of Australia.

We work closely with stakeholders to engineer simplified and practical structures that meet the high-level specifications. We understand the deliverables required to achieve engineering conformance in the mining and resources sector.

We have a proven track record of delivering significant improvements to our clients' business operation.

**"The value we get from dealing with Triaxial goes far beyond the price paid for a specific task. Knowing they are supportive and ready to assist provides considerable comfort..."**

**National Weighing & Instruments**



Boral Crush Plant, QLD

## PROJECTS

### DARWIN MARINE SUPPLY BASE, NT

Supply base for the offshore oil and gas industry, including drilling fluid, mixing and storage facility and laydown and storage areas for dangerous goods.

### BORAL CRUSH PLANT, QLD

Building infrastructure associated with the Ormeau plant, including structures housing tertiary and secondary crushing, screening and scalping stations.

### BHPB SURFACE WORKSHOP EXTENSION, SA

Olympic Dam Diesel Workshop extension for increased capacity of maintenance activities, incorporating heavy duty cranes and pavements to BHPB Specifications.

### BORAL CLINKER BUILDING, VIC

Clinker storage building and external infrastructure, incorporating 35m high main storage warehouse with tripper conveyor, external elevator and conveyor gantries.

# WATER & SEWER

Triaxial has an experienced Team of water and sewer engineers and designers. Skills have been developed over many years of application in the water industry.

We apply our comprehensive knowledge of the water sector with design led engineering to create efficient and cost-effective solutions. Our planning, design, and construction processes for water projects consider several key areas such as: sustainable water management, water security, water efficiency, sustainable sanitation and risk mitigation from water pollution and floods.

Triaxial's services include; water reticulation, distribution and trunk mains, water pump stations, gravity sewer mains, sewage rising mains, sewage pump stations and sewage treatment plans.

**"The Triaxial team are knowledgeable, reliable, highly competent and trustworthy. They are great to partner with on projects, true professionals in their field."**

**RIVERS CONSTRUCTION**



Avoca Lagoon Crossing Transfer Main, NSW

## PROJECTS

### AVOCA LAGOON CROSSING TRANSFER MAIN, AVOCA, NSW

New DN450 water main design crossing Avoca Lagoon to ensure security of potable water supply to the suburbs of Avoca Beach, Copacabana and MacMasters Beach

### SEWAGE PUMP STATIONS, TOUKLEY, NSW

Civil, Structural & Mechanical design for the refurbishment of 3 sewage pump stations located at Toukley on the Central Coast of NSW.

### SEWAGE TREATMENT PLANT, SINGLETON, NSW

Civil, Structural & Mechanical design for Singleton Council. An extensive project significantly enhancing the Facilities' overall primary sewage treatment capabilities.

### SEWAGE PUMP STATION & RISING MAIN, CENTRAL COAST, NSW

Civil, Structural and Mechanical Design as part of the 'Central Coast Regional Plan 2036'. Scope of works included the design of gravity sewer main, 5.0m diameter wet well, valve pit, 250kL emergency storage tank, electrical switch room and a new sewage rising main.

## WHAT OUR CLIENTS SAY

*"The value we get from dealing with Triaxial goes far beyond the price paid for a specific task. Knowing they are supportive and ready to assist provides considerable comfort when dealing with projects where their expertise is called upon"*

**National Weighing & Instruments**

## OUR HISTORY

Triaxial was established in 2012 providing multidisciplinary engineering consulting services and has enjoyed rapid growth in a short time.

The Company was born of our Director's conviction that a more collaborative and open-minded approach to engineering would lead to work of greater quality and enduring relevance. Triaxial continues to be recognised for professional, high quality and imaginative solutions to challenging projects.

We are an organisation where creative professionals can develop their talents with likeminded colleagues to produce outstanding outcomes. We are committed and focussed to achieve sustainable development outcomes across the built environment. Our Clients remain the centrepiece of what we do to ensure as a business we continually exceed their expectations.

*“Triaxial is renowned for our commitment to make a difference though our communication, collaboration, technical excellence and quality solutions.”*

## OUR PEOPLE

Triaxial is a professional group of individuals — people with outstanding **Character**, unwavering **Commitment** to our core and culture, strong **Expertise** and genuine **Enthusiasm** for their work.

Our Engineers are problem solvers and lateral thinkers and are driven to find solutions. We enjoy working on a broad variety of projects Australia-wide, and the opportunity to put our stamp on the built environment, help businesses thrive and make our communities safer and sustainable.

Working at Triaxial is a team endeavor characterized by a culture of trust and personal responsibility. We encourage open communication, continuous learning, innovative thinking and free-flowing collaboration.

*“Our people are our best asset. We aim to procure and develop the best people the industry has to offer.”*



**DANIEL CULLY**  
Director | Senior Structural Engineer  
BE(Hons) | ME(Hons) | FIEAust | CPEng | Eng Exec | NER | BPTas | RPEQ | RBPV | APEC Eng | InPE

✉ dcully@triaxial.com.au  
in Daniel's LinkedIn Profile



**DREW ROBERTS**  
Director | Senior Structural Engineer  
BEng | MIEAust | CPEng | EngExec | NER | NT Reg

✉ droberts@triaxial.com.au  
in Drew's LinkedIn Profile



**JEFFREY KNOX**  
Director | Senior Civil/Structural Designer Drafter  
Struct. Eng. Cert. | Assoc. Prof. Cert. in SiD

✉ jknox@triaxial.au  
in Jeffrey's LinkedIn Profile



**TREVOR KERRISON**  
General Manager HR & Operations  
MBA | BA | AHRI | AMI

✉ tkerrison@triaxial.au  
in Trevor's LinkedIn Profile



**ROBERT WADIH**  
Financial Controller  
BComm | JP

✉ rwadih@triaxial.au  
in Robert's LinkedIn Profile



**DANIEL VYDEN**  
Partner | Senior Structural Engineer  
BEng (Hons) | CPEng | MIE Aust | NER | RPEQ | BSPTas

✉ dvyden@triaxial.au  
in Daniel's LinkedIn Profile



**BRETT RYAN**  
Partner | Hydraulic Engineer | Central Coast Office Manager  
Dip – Hydraulic.Eng

✉ bryan@triaxial.au  
in Brett's LinkedIn Profile



**JAMES BLACKBURN**  
Partner | Senior Structural Engineer  
BEng (Hons) | MIE Aust

✉ jblackburn@triaxial.au  
in James' LinkedIn Profile



**ROBERT CONSIDINE**  
Regional Manager SA | Adelaide Office Manager | Senior Structural Engineer  
BE (Struct.) (Hons) | CPENG | FIEAust | NER | RPEQ

✉ rconsidine@triaxial.au  
in Robert's LinkedIn Profile



**DENIS GOGGIN**  
Regional Manager | New South Wales Structures Manager  
BEng (Hons) | CPENG | NER

✉ dgoggin@triaxial.au  
in Denis' LinkedIn Profile



**MICHAEL DAWSON**  
Regional Manager | Senior Civil & Structural Engineer  
BE (Civil) | DipEngPrac | MIEAust | CPENG | NER | APEC Engineer | IntPE (Aus)

✉ mdawson@triaxial.au  
in Michael' LinkedIn Profile



**BEN WILLIAMS**  
Regional Manager | Senior Civil Engineer  
BE (Civil) (Hons) | MIEAust

✉ bwilliams@triaxial.au  
in Ben' LinkedIn Profile



**GUILL DE SWARDT**  
Group Civil Manager  
MIEAust | CPENG | NER

✉ gdswardt@triaxial.au  
in Guillaume's LinkedIn Profile



**RORY O'CONNELL**  
Team Leader | Senior Structural Engineer  
BEng (Civil) (Hons) | BCom | CPeng | NER | MIE Aust

✉ roconnell@triaxial.au  
in Rory's LinkedIn Profile



**SEAN TYNAN**  
Team Leader | Senior Hydraulic Engineer  
Dip (Hydraul.) | Cert IV Hyd.ServDes.

✉ stynan@triaxial.au  
in Sean's LinkedIn Profile



**JIM DISHER**  
Team Leader | Senior Civil Engineer | Mudgee Office Manager  
BEng (Civil) | MEngSt | MIEAust

✉ jdisher@triaxial.au  
in Jim's LinkedIn Profile



**MICHAEL DOBROSZCZYK**  
Team Leader | Senior Civil Designer

✉ michaeldk@triaxial.au  
in Michael's LinkedIn Profile



**NIKI ZHENG**  
Queensland Office Manager | Senior Structural Engineer  
BEng | MEng | CPENG | NER | MIE Aust | RPEQ

✉ nzheng@triaxial.au  
in Niki's LinkedIn Profile



**ANDRE ALBERTUS**  
Drafting Manager

✉ aalbertus@triaxial.au  
in Andre's LinkedIn Profile



**MARVIN LORENZO**  
Team Leader | Senior Structural Engineer  
BScCivEng

✉ mlorenzo@triaxial.au  
in Marvin's LinkedIn Profile



**PETER GRAY-THOMPSON**  
Darwin Office Manager | Structural Engineer  
BEng (Hons) | MIEAust

✉ pgraythompson@triaxial.au  
in Peter's LinkedIn Profile



**CHRISTIANA STRANEY**  
Team Leader | Senior Remedial Engineer  
BEng (Civil) | MIEAust

✉ cstraney@triaxial.au  
in Christiana's LinkedIn Profile



## CHARITIES & SPONSORSHIPS

Triaxial is proud to be involved with several charities and community groups both through financial donation and providing technical expertise. We support our staff's involvement in charitable and fundraising activities, which we strongly encourage.

We have supported a number of organisations such as the Royal Flying Doctor Service, Black Dog Institute, Beyond Blue, Movember Foundation, St Vincent De Paul, Prostrate Cancer Foundation and Oxfam Australia.

In addition we have provided financial donations to a number of cultural events, local community groups and sporting organisations to assist with the fabulous work they do, particularly at grass-roots level.



Royal Flying Doctor Service



Black Dog Institute



Proudly supporting  
Beyond Blue



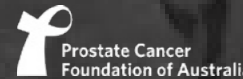
MOVEMBER



St Vincent de Paul Society  
Good Works



OXFAM



Prostate Cancer Foundation of Australia

## Building Our COMMUNITIES

It's important to us at Triaxial to participate in projects and activities that make a positive impact which benefits the community. Often this has involved us donating our professional services and/or making a financial contribution to a community initiative, or to a not-for-profit organisation that needs help to support the great work they do. Below are some of the projects that Triaxial has supported:

### SALT School Building, Cambodia

We were privileged to volunteer our conceptual design and structural engineering services to RAW Impact for the new SALT school building in Cambodia. The building consists of six large classrooms and a library. The structure is raised from floodwaters by utilising suspended slabs and large concrete columns, incorporating timber framing elsewhere.

### Forage Built Community Housing Solutions, SA

We partnered with Forage Built, an organisation tackling homelessness through innovative, sustainable and integrated housing solutions. We are proud to have donated our services to the 'Calyx-16 Project' to help create small, safe and affordable modular homes for people experiencing homelessness.

### Indigenous Community Infrastructure Project, NT

We were proud to provide our engineering services for the construction of twenty new dwellings in the townsite of Maningrida, in the Northern Territory, which has created vital new housing to alleviate overcrowding issues. Triaxial has provided structural design and construction certification services for infrastructure projects in a further seven towns in the Territory to improve dwelling facilities in the various communities.

### Yorke Peninsula Eastern Osprey Project, SA


Triaxial designed special platform nests for the Eastern Osprey, a medium-sized fish-eating raptor, located around the Yorke Peninsula in South Australia. The concerning low Osprey population has placed the majestic bird on the endangered list with extremely limited numbers of breeding pairs in existence. Triaxial designed the purpose-built platforms to suit the local landscape, maximising the chances of the Osprey adopting the nests and breeding. We were proud to be involved in such a responsible environmental project which has consequently produced a great outcome with the Osprey adopting the platforms resulting in an increase in the population.


### Rotary APY Land Shelters, SA


In partnership with the Onkaparinga Rotary Club in South Australia, Triaxial designed a number of rest stops providing vital shelter, water and resting facilities for travellers across the 110,000 square kilometres of the Anangu Pitjantjatjara Yankunytjatjara (APY) Lands. The area located in the remote northwest of the State, is a sparsely populated local government area for Indigenous people. Being such a large, isolated area, a focus with the engineering design was to ensure viability, longevity and safety of the buildings.



**TRIAXIAL**  
CONSULTING

 1300 874 294

 [admin@triaxial.au](mailto:admin@triaxial.au)

 [triaxial.au](http://triaxial.au)

## WHERE WE ARE

### ADELAIDE

71 Glen Osmond Rd,  
Eastwood SA 5063

### BAROSSA

Unit 1, 86D Murray St,  
Tanunda SA 5352

### BELMONT (NEWCASTLE) BRISBANE

24 Macquarie St,  
Belmont NSW 2280

3/8 Duncan St,  
Fortitude Valley QLD 4006

### CENTRAL COAST

Unit 1, 3 Teamster Close,  
Tuggerah NSW 2259

### DARWIN

Unit 1, 31 Jessop Cres,  
Berrimah NT 0828

### MUDGEES

1/28 Market St,  
Mudgee NSW 2850

### PARRAMATTA

52/2 O'Connell St,  
Parramatta NSW 2150

### SYDNEY

Suite 12, L14, 327 Pitt St,  
Sydney NSW 2000